

ITEM 15A		ITEM 15	
12045808 CONNECTOR	12065425 CONNECTOR	12045808 CONNECTOR	12065425 CONNECTOR
12045808 LOCK	12045808 LOCK	12045808 LOCK	12045808 LOCK
12059168 PLUG	12059168 PLUG	12059168 PLUG	12059168 PLUG
CIR # POS1	COLOR	CIR # POS1	COLOR
- A	PLUG	- A	PLUG
- B	PLUG	- B	PLUG
- C	PLUG	- C	PLUG
- D	PLUG	- D	PLUG
- E	PLUG	- E	PLUG
- F	PLUG	- F	PLUG
- G	PLUG	- G	PLUG
- H	PLUG	- H	PLUG
- J	PLUG	- J	PLUG
- K	PLUG	- K	PLUG

ITEM 16A		ITEM 16	
12162000 CONNECTOR	12052624 LOCK	12052624 LOCK	12052624 LOCK
12052624 LOCK	12052624 LOCK	12052624 LOCK	12052624 LOCK
12059168 PLUG SEAL	12059168 PLUG SEAL	12059168 PLUG SEAL	12059168 PLUG SEAL
CIR # POS1	COLOR	CIR # POS1	COLOR
55	A 18 DRANGE/BLACK	55	A 18 DRANGE/BLACK
48	B 18 BLUE/WHITE	48	B 18 BLUE/WHITE

ITEM 19		ITEM 19A	
12162194 CONNECTOR	12162194 CONNECTOR	12162194 CONNECTOR	12162194 CONNECTOR
12162194 TERMINAL	12162194 TERMINAL	12162194 TERMINAL	12162194 TERMINAL
CIR # POS1	COLOR	CIR # POS1	COLOR
318	A 18 BLACK	318	A 18 BLACK
32	B 18 YELLOW	32	B 18 YELLOW

ITEM 30		ITEM 29	
12073938 CONNECTOR	12048874 TERMINAL	12073938 CONNECTOR	12048874 TERMINAL
12048874 TERMINAL	12048874 TERMINAL	12048874 TERMINAL	12048874 TERMINAL
CIR # POS1	COLOR	CIR # POS1	COLOR
306	A 18 GRAY	306	A 18 GRAY
310	B 18 BLACK	310	B 18 BLACK
46	C 18 BLUE	46	C 18 BLUE

ITEM 31		ITEM 32	
12162197 CONNECTOR	12162197 TERMINAL	12073938 CONNECTOR	12048874 TERMINAL
12162197 TERMINAL	12162197 TERMINAL	12048874 TERMINAL	12048874 TERMINAL
CIR # POS1	COLOR	CIR # POS1	COLOR
429	A 18 TAN	429	A 18 TAN
578	B 18 BLACK	578	B 18 BLACK

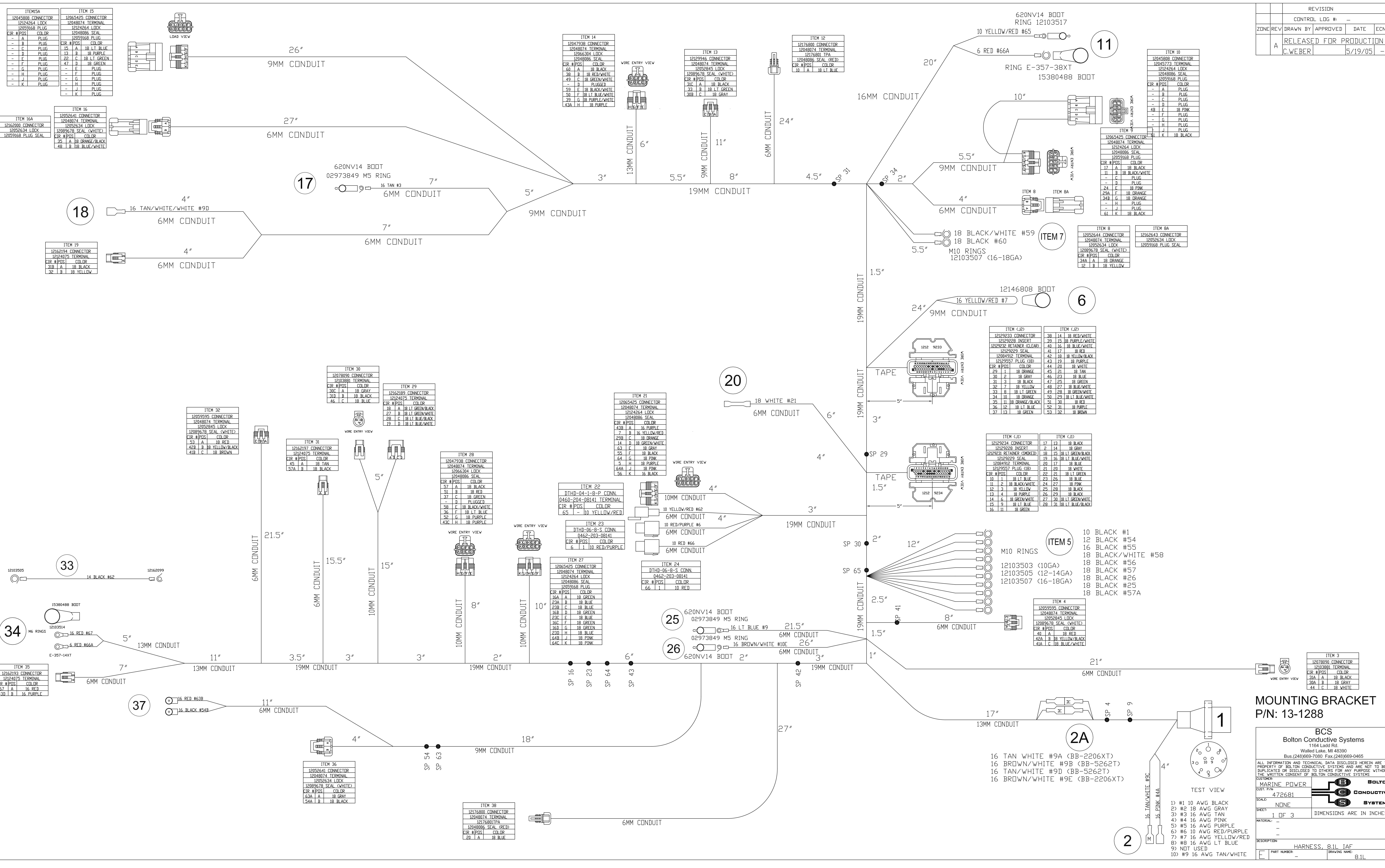
ITEM 33		ITEM 34	
12103505	14 BLACK #62	12103505	14 BLACK #62
12168099		12168099	

ITEM 35		ITEM 36	
12062192 CONNECTOR	12048874 TERMINAL	12062192 CONNECTOR	12048874 TERMINAL
12048874 TERMINAL	12048874 TERMINAL	12048874 TERMINAL	12048874 TERMINAL
CIR # POS1	COLOR	CIR # POS1	COLOR
657	A 16 RED	657	A 16 RED
430	B 16 PURPLE	430	B 16 PURPLE

ITEM 37		ITEM 38	
16 RED #638	16 BLACK #548	12176800 CONNECTOR	12048874 TERMINAL
16 RED #638	16 BLACK #548	12048874 TERMINAL	12048874 TERMINAL
12176800 CONNECTOR	12048874 TERMINAL	12176800 CONNECTOR	12048874 TERMINAL
12048874 TERMINAL	12048874 TERMINAL	12048874 TERMINAL	12048874 TERMINAL
CIR # POS1	COLOR	CIR # POS1	COLOR
634	A 18 GRAY	634	A 18 GRAY
548	B 18 BLACK	548	B 18 BLACK

ITEM 14		ITEM 13	
12047938 CONNECTOR	12048874 TERMINAL	12129246 CONNECTOR	12048874 TERMINAL
12048874 TERMINAL	12048874 TERMINAL	12048874 TERMINAL	12048874 TERMINAL
CIR # POS1	COLOR	CIR # POS1	COLOR
50	A 18 BLACK	50	A 18 BLACK
49	C 18 GREEN/WHITE	49	C 18 GREEN/WHITE
50	F 18 LT BLUE/WHITE	50	F 18 LT BLUE/WHITE
39	G 18 PURPLE/WHITE	39	G 18 PURPLE/WHITE
434	H 18 PURPLE	434	H 18 PURPLE

ITEM 12		ITEM 10	
12176800 CONNECTOR	12048874 TERMINAL	12045808 CONNECTOR	12045772 TERMINAL
12048874 TERMINAL	12048874 TERMINAL	12045808 CONNECTOR	12045772 TERMINAL
CIR # POS1	COLOR	CIR # POS1	COLOR
10	A 18 LT BLUE	10	A 18 LT BLUE



REVISION				
CONTROL LOG #	-	DATE	ECNH	
ZONE REV	A	DRAWN BY	C.WEBER	5/19/05
RELEASED FOR PRODUCTION				

ITEM 10		ITEM 9	
12045808 CONNECTOR	12045772 TERMINAL	12065425 CONNECTOR	12048874 TERMINAL
12045808 LOCK	12045808 LOCK	12048874 TERMINAL	12048874 TERMINAL
CIR # POS1	COLOR	CIR # POS1	COLOR
17	A 18 BLACK	17	A 18 BLACK
11	B 18 BLACK/WHITE	11	B 18 BLACK/WHITE
48	F 18 PINK	48	F 18 PINK
24	E 18 PINK	24	E 18 PINK
29A	F 18 DRANGE	29A	F 18 DRANGE
249	G 18 DRANGE	249	G 18 DRANGE
41	H 18 PURPLE	41	H 18 PURPLE
61	K 18 BLACK	61	K 18 BLACK

ITEM 8		ITEM 8A	
12052644 CONNECTOR	12048874 TERMINAL	12052644 CONNECTOR	12052644 LOCK
12048874 TERMINAL	12052644 LOCK	12052644 LOCK	12052644 LOCK
CIR # POS1	COLOR	CIR # POS1	COLOR
41A	A 18 DRANGE	41A	A 18 DRANGE
12	B 18 YELLOW	12	B 18 YELLOW

ITEM 7		ITEM 6	
18 BLACK/WHITE #59	18 BLACK #60	12146808 BOOT	16 YELLOW/RED #7
M10 RINGS	12103507 (16-18GA)	12129246 BOOT	16 YELLOW/RED #7

ITEM 5D		ITEM 5B	
12129246 CONNECTOR	38 14 18 RED/WHITE	12129246 CONNECTOR	38 14 18 RED/WHITE
12129246 INSERT	39 15 18 PURPLE/WHITE	12129246 INSERT	39 15 18 PURPLE/WHITE
12129246 RETAINER (OLEAD)	40 16 18 BLUE/WHITE	12129246 RETAINER (OLEAD)	40 16 18 BLUE/WHITE
12129249 SEAL	41 17 18 RED	12129249 SEAL	41 17 18 RED
12084912 TERMINAL	42 18 18 YELLOW/BLACK	12084912 TERMINAL	42 18 18 YELLOW/BLACK
12129247 PLUG (UB)	43 19 18 PURPLE	12129247 PLUG (UB)	43 19 18 PURPLE
CIR # POS1	COLOR	CIR # POS1	COLOR
29	1 18 DRANGE	29	1 18 DRANGE
30	2 18 GRAY	30	2 18 GRAY
31	3 18 BLACK	31	3 18 BLACK
32	7 18 YELLOW	32	7 18 YELLOW
33	8 18 LT GREEN	33	8 18 LT GREEN
34	10 18 DRANGE	34	10 18 DRANGE
35	11 18 DRANGE/BLACK	35	11 18 DRANGE/BLACK
36	12 18 LT BLUE	36	12 18 LT BLUE
37	13 18 GREEN	37	13 18 GREEN

ITEM 4D		ITEM 4B	
12129246 CONNECTOR	17 13 18 BLACK	12129246 CONNECTOR	17 13 18 BLACK
12129246 INSERT	14 14 18 GRAY	12129246 INSERT	14 14 18 GRAY
12129249 SEAL (OLEAD)	18 15 18 LT GREEN/BLACK	12129249 SEAL (OLEAD)	18 15 18 LT GREEN/BLACK
12129249 SEAL	19 16 18 LT BLUE/WHITE	12129249 SEAL	19 16 18 LT BLUE/WHITE
12084912 TERMINAL	20 17 18 BLUE	12084912 TERMINAL	20 17 18 BLUE
12129247 PLUG (UB)	21 20 18 WHITE	12129247 PLUG (UB)	21 20 18 WHITE
CIR # POS1	COLOR	CIR # POS1	COLOR
18	1 18 LT BLUE	18	1 18 LT BLUE
11	2 18 BLACK/WHITE	11	2 18 BLACK/WHITE
12	3 18 YELLOW	12	3 18 YELLOW
13	4 18 PURPLE	13	4 18 PURPLE
14	5 18 GREEN/WHITE	14	5 18 GREEN/WHITE
15	6 18 LT BLUE	15	6 18 LT BLUE
16	11 18 PURPLE	16	11 18 PURPLE
12	11 18 GREEN	12	11 18 GREEN

ITEM 5	
M10 RINGS	10 BLACK #1
	12 BLACK #54
	16 BLACK #55
	18 BLACK/WHITE #58
	18 BLACK #56
	18 BLACK #57
	18 BLACK #26
	18 BLACK #25
	18 BLACK #57A

ITEM 4		ITEM 3	
12059168 CONNECTOR	12048874 TERMINAL	12073938 CONNECTOR	12048874 TERMINAL
12048874 TERMINAL	12052644 LOCK	12048874 TERMINAL	12048874 TERMINAL
CIR # POS1	COLOR	CIR # POS1	COLOR
40	A 18 RED	40	A 18 RED
42A	B 18 YELLOW/BLACK	42A	B 18 YELLOW/BLACK
41A	C 18 BLUE/WHITE	41A	C 18 BLUE/WHITE

**MOUNTING BRACKET**  
P/N: 13-1288

**BCS**  
Bolton Conductive Systems  
1164 Lido Rd  
Wallis Lake, MI 48390  
Bus.(248)669-7080 Fax.(248)669-0465

ALL INFORMATION AND TECHNICAL DATA DISCLOSED HEREIN ARE THE PROPERTY OF BOLTON CONDUCTIVE SYSTEMS AND ARE NOT TO BE REPRODUCED OR DISCLOSED TO OTHERS FOR ANY PURPOSE WITHOUT THE WRITTEN CONSENT OF BOLTON CONDUCTIVE SYSTEMS.

**MARINE POWER** **BOLTON CONDUCTIVE SYSTEMS**

SEAL: 472681  
SHEET: 1 OF 3  
DIMENSIONS ARE IN INCHES

DESCRIPTION: HARNESS, 8.1L IAF  
PART NUMBER: - DRAWING NAME: 8.1L

- TEST VIEW
- 1) #1 10 AWG BLACK  
2) #2 10 AWG GRAY  
3) #3 16 AWG TAN  
4) #4 16 AWG PINK  
5) #5 16 AWG PURPLE  
6) #6 10 AWG RED/PURPLE  
7) #7 16 AWG YELLOW/RED  
8) #8 16 AWG LT BLUE  
9) NET USED  
10) #9 16 AWG TAN/WHITE